

# TREV-ECHOES

Volume 49, Issue 1

Trevecca Nazarene College

September 10, 1992

## T.I.A. SWITCHES TO SOCIETIES

By Kristi Stephens

The Trevecca Intramural Association has decided, in conjunction with the Student Government, administration, and concerned students, to revitalize a format used in times past and replace the current "pick-up teams" system with societies.

The entire student body will be randomly divided into four teams consisting of approximately 200 people. The change is expected to generate involvement for the student body as a whole, increase interest, and give all students a chance to be involved with T.I.A. Another factor concerning coach Alan Smith was, "When we dropped societies, we dropped the girls." The new system will allow a broader spectrum of sports for both sexes and occasional co-ed sports.

"It's Trevecca intramurals and it should be drawn from the entire student body," commented Stan Jones at an informational meeting on Monday 8/31.

A survey of 100 students revealed that 69 support the idea of societies, 24 do not, and 7 are undecided. One concern of those opposed to the idea was that competition would be eliminated if teams couldn't be chosen. T.I.A. director, Karla Zurcher, responded, "If you have sports, you have competition." Changing to societies will still allow room for days where teams can be chosen. Service clubs who play together will still have a chance to do so. "Service clubs are not sports clubs," remarked Zurcher. "[However] T.I.A. is a service and what we want is a betterment of the student body as a whole."

In addition to a men's and women's program director, each society will have one male and one female representative to form a committee that will be instrumental in decision making within the societies.

Students were concerned about the change and suggested that the T.I.A. officials and participants compromise. "Can't it be an option rather than a mandate?" asked Jamie Wandling. But others offered examples of sister institutions and the success with their societies. Stan Jones said of MVNC, "Mt. Vernon blew Trevecca away in participation."

The switch to societies will involve more people and it will require more organization and more support. As Zurcher stated, "I want this thing to grow."

Editorial:

## Hurricane Andrew Forces Focus on Empathy

By Juan Arroyo

"Wanna go for a spin?" I guess that is what Hurricane Andrew asked the Floridians in the last days of August. What a horrible tragedy took place! My heart goes out to the residents of all those areas that were damaged by the hurricane. I consider myself a victim of the tragedy. My sister's home is (or was) located in Homestead, one of the most damaged areas.

As I pondered on the situation, I thought of the many things that you can say to a victim of a similar tragedy. Would you say "I'm sorry..."? But you didn't do anything to hurt them. Would you say "I share your pain"? But you aren't experiencing the pain they are experiencing. Then what do you say? Nothing?

I guess that would be the safest way to go, but what about that whole concept of empathy? Does it actually exist? Can someone actually feel what others feel? Think about it. How many times has a friend shared with you an anecdote and your response conveyed a sense of "I know what you feel..."? Is what you are saying true? Or is it a way to show pity?

Whatever the situation, all this thinking brought me to a conclusion. We can never truly experience God unless we can genuinely empathize with others. Only God can truly know and understand what you are feeling because he is the designer of your heart. He is the designer of your mind. He knows how you think and how you feel at all times. It is amazing to understand the concept of empathy.

Just think about a plan that you have developed. Not one person knows it as intricately as you do. You are the only one who knows all the options of the plan. You know the perfect time and the perfect move. It is all in your mind. You are the only one who knows the plan to its perfection.

It is probably the same thing with God. He made a plan--that is you. He knows every move, every option to His plan. He knows every thought you have and every emotion you feel. He knows it even better than you do because He understands how and why each emotion and thought is produced. He knows His plans and that you are that plan.

To be able to put yourself in someone else's shoes is to be like God. Empathy is an action that is godly. If we could all attempt to be more empathetic-not with words but with emotions and actions-then maybe we would live in a better world.

I could never change my sister's feelings. Even if I tell her that I'm as sorry as Perot. That won't make up for the feelings she is experiencing knowing that she has lost her house, a lot of belongings and especially her dental equipment. All I can do is show her with actions that I care. I have called her to keep myself updated concerning the events. But most important, I have called to lend an ear and a heart. James 1:19 tells us that we ought to be quick to listen, slow to speak, and slow to become angry. If you practice this concept, I know you will find yourself closer to God.

## From The Editor's Desk:

By Kristi Stephens

In early June, when I began to think of what to say in my very first editorial as editor of the newspaper, my mind ran wild with ideas. I considered an editorial chock full of facts and statistics about the corruption of the family and what we as Christians need to do about it. I thought about writing a quaint welcome-back-to-school-wasn't-summer-fun-but-aren't-we-all-glad-to-be-back story but I decided not to. I was particularly interested, after watching a Prime Time Live special on televangelist Robert Tilton, in exploiting his ludicrous behavior off camera but concluded that I'd better not because he might find out and try to exorcise from me demonic spirits thus leading me to my only hope for salvation--one of his anointed prayer cloths (tax not included).

Not once did I consider using my own experience as a topic. Besides, I thought, the newspaper is simply a job that I have to get done to meet some requirements. Then we had the SGA retreat and I realized that I, with my staff, could really make a difference through the paper. Then we had chapel and I realized that through this

paper I could try to maintain the delicate balance between ministry and media. But then, we had church. And I realized that I can't do this alone and I can't make a real difference apart from God. All this talk of redemptive partnerships and open-endedness has finally hit me like a ton of bricks. That Sunday in church I worshiped for the first time in a long time as we sang, "My God is reconciled; His pardn'ing voice I hear. He owns me for His child; I can no longer fear. With confidence I now draw nigh, with confidence I now draw nigh, And 'Father, Abba, Father,' cry."

paper I could try to maintain the delicate balance between ministry and media. But then, we had church. And I realized that I can't do this alone and I can't make a real difference apart from God. All this talk of redemptive partnerships and open-endedness has finally hit me like a ton of bricks. That Sunday in church I worshiped for the first time in a long time as we sang, "My God is reconciled; His pardn'ing voice I hear. He owns me for His child; I can no longer fear. With confidence I now draw nigh, with confidence I now draw nigh, And 'Father, Abba, Father,' cry."

# Left! Left! Left! (right?) Left!

By Scott Fraley

Clinton or Bush? The choice has seemed weak enough to some that they have felt a third choice was needed, but those who are declaring the doom of the two-party system have misread the problem. Our choices are strong when seen with an understanding of political dynamics. Increasingly, the motivating factors in one's political decisions are one sided views on moral issues that fail to take into account any viable philosophy of political history.

The issues of abortion, rights for persons who choose alternative sexual lifestyles, and a cleaner environment for America and her children are as tired as the recessing economy. They have been beaten to a meaningless pulp by conservatives and liberals alike, and have so obscured the true debate in any election that the voters need to be reeducated. The question is not what moral or immoral side the candidate falls on but what party one wishes to vote into office. With this new look at the true debate, the tough answer to a difficult question is the democratic party.

When our founding fathers set forth the constitution of what would become one of history's great nations, not one envisioned a two-party system to elect government servants. With the reading of the constitution by subsequent generations came new strategies on how to better develop the ideals put forth in the constitution. Whether economic or social, the issues were not considered moral. The constitution safeguarded for them, as it does for us, the Judeo-Christian values of liberty, equality and freedom. All new political strategies were different twists on one common

goal-life, liberty and the pursuit of happiness (the latter added as a result of the revolutionary enlightenment).

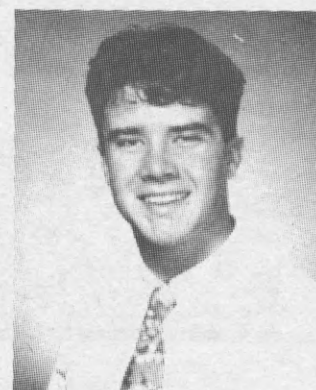
Parties developed in response to the constitutions call for morality. The conflict became the means used to fulfill the constitution. Today the parties are no different in this respect. The Republican party espouses the classically liberal idea of laissez-faire government. Leave the people alone, the Grand Ole Party says, and they will take care of themselves. The poor will get fed. The economy will roll. All will cooperate because they understand that equality is the key to a successful constitution.

The Democratic party understands better the nature of man. For example, the party sees that the poor aren't getting fed. The party sees that the rich are getting richer and the party sees a possible solution in the redistribution of wealth. This does take more government involvement- a lot more. However, the democratic way is better served by a party better equipped to handle problems in a practical manner. The Democrats give the people a real chance to have effective power.

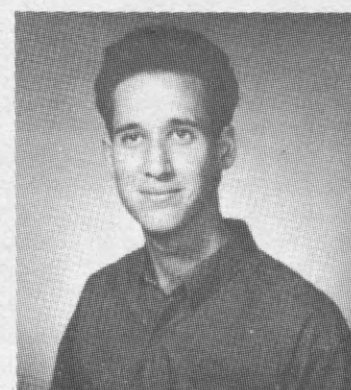
Clinton or Bush? The choice is more than a tally of where the two stand on your pet moral issues. America's destiny is decided by your vote. Will you choose a party that can offer only less involvement? Will you choose a party that can offer small government but small results, with little chance for the problems we face to just "work themselves out"? Or will you vote for the power to change? Clinton's strength is his party. Vote for the party that can affect us where we are. Vote Democratic and put Clinton in office.

# E L E C T I O N

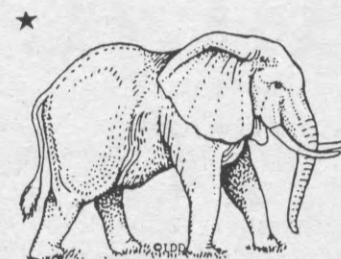
# '92



Scott Fraley



Michael Eldridge



## Get Right (or Get Left)

By Michael Eldridge

This fall we, the American voters, have an opportunity to make a difference in the landscape of American politics. The people of the United States of America have two major candidates to choose from, the Democratic nominee Arkansas Governor Bill Clinton and the Republican nominee President George Bush. Throughout this summer we have heard a lot about change from the Democratic party. It claims that in order for change to occur we need to vote for "its" candidate.

We also received sharp criticism from the Democrats in reference to Bush's leadership. To most Americans this is fully convincing. Unfortunately, it is not consistent with reality. For the past four years our nation has witnessed our president struggling with a Democratic congress that halted any economic, educational and environmental progress our country needs to make. Democrats would

like us to believe that the blame all falls on the incumbent president. But in fact, it falls on the other end of Pennsylvania Avenue where for 38 years the Democrats have had a majority lock on Congress. As voters we must take ownership of our own responsibilities, first by breaking this ineffective longevity in congress and by voting in a Republican Congress that would get this country on the road to quality.

Democrats will tell you that the combination of a Republican president and a Republican congress would be ineffective due to Bush's "failed" economic and social plans. In fact, it is not that they do not work. They have not even been tried. The same Democrats that are yelling for change are the same Democrats that would not give change a chance.

Friends, I encourage you not to sit back and enjoy the performance that the Democrats would like you to see but to wake up and truly examine the accomplishments and proposals of President Bush.

# FROM THE PRESIDENT'S DESK

By President  
Millard Reed

Welcome to a Redemptive Partnership!

This time last year many of you were welcoming me as a new president. I thank each of you who were so kind. Although the year was demanding, it was very effective. We closed the books financially with a comfortable margin in the black. New personnel and programs are being well received. Enrollment in traditional undergraduate programs is showing a slight increase. It has been a very productive year.

At the beginning of this new year, it is my privilege, as president, to welcome you. I am especially pleased to be asked by Editor Stephens to greet the Trev-Echoes readers. My welcome is specific. I welcome you to a Redemptive Partnership.

Already the faculty, administration, and student leaders have heard me use this terminology. It fits the theme that Chaplain Green and I have been discussing for this school year.

It assumes that when things go wrong, we have three options. We can:

1. Complain
2. Quit
3. Join a Redemptive Partnership

Both words of the phrase "redemptive partnership" are essential. "Redemptive" implies real change for the better. It speaks of restoration to original or greater value. It pictures buying back with connotations of gratitude, service, and debtorship. "Partnership" denotes the nature of actions and interrelations of two parties. It describes a one-to-one relationship which has an important area of life as

its topic. Partnership connotes such attributes as agreement, consent, symmetry of relationship—mutual dignity and community, as well as ideas about investment, risk, process, and time.

As president of Trevecca College, I gladly invite all students, faculty, administration, staff, parents, local churches, etc., to join in Redemptive Partnerships. I ask you to engage in "redemptive conversation." Redemptive conversation has three essential questions which call for answers. They are:

1. How are you doing? For us to be a true "community" there must be an effective "disclosure system." When we ask the casual question, "How are you?" we must ask it with a degree of authenticity that solicits a genuine answer. Otherwise we are not community.

2. Are you obedient to your calling? This is based on the presupposition that all of us are under the sovereign guidance of God who has called us to be "holy" and given specific assignments within His Kingdom. This question also assumes that we are mutually accountable.

3. What would you like me to do for you? It is a partnership. The task is not double by either of us. But our combined resources and commitment will bring our shared moments of celebration.

So welcome! Welcome to Redemptive Partnerships. While you are a part of Trevecca, I pray that what you see, what you study, and what you do will enable you to know the joy of redemptive partnerships. And when you move into a home of your own, may you be redemptive partners there as well.

## FYI

The Nashville Symphony will open its 47th season on September 11-12 with a concert with guest pianist Misha Dichter. The concerts begin at 8:00p.m. Tickets are \$7, \$12, \$18, \$26 and \$30.

The Nashville Pencil Point Program is a joint venture with various institutions around the city to increase the benefits of education for elementary students. The Trevecca student body has for some years sponsored through this program the Berry Road Elementary School. In the next few weeks, Trevecca students will be given numerous chances to be of service to these deserving young students. I encourage you to be active in this academic service by sponsoring a student through tutoring or reading to the students. Berry Elementary School can be a fantastic outlet for Christian service. Be willing!

\*Americans throw away enough office paper annually to build a wall twelve feet high stretching from Los Angeles to New York..

\*Only 52 CA Condors remain alive.

\*Every Sunday, 500,000 trees are cut down to make newspapers.

\*The US covers 2,000 acres of land under concrete and asphalt daily.

\*Blue Bird populations have dropped 90% in 20 years.

\*More energy escapes through windows in the US each year than comes down the Alaska pipeline.

\*Two of the world's plants and two animals become extinct each day.

\*Every two weeks, Americans throw away enough glass bottles and jars to fill up the 1,350-foot twin towers in New York City.

### Trev-Echoes

Student publication of Trevecca Nazarene College

**Editor-in-Chief** Kristi Stephens

**Sponsor** Porter King

**Advisor** Rob Blann

**Staff** The contributing writers for the first issue of the 1992-93 Trev-Echoes are Juan Arroyo, Michael Eldridge and Scott Fraley. Special thank to President Reed and Chaplain Tim Green for their contributions.

The views expressed in the Trev-Echoes are those of the individual writers and do not necessarily represent the views of the Trev-Echoes or Trevecca Nazarene College.

## Sharing the Dream...

By Chaplain

Tim Green

DOTS!!! It seems like ever since our opening convocation, dots have appeared everywhere I turn...on my office door, on chalkboards, even on class attendance sheets! What is even more exciting is the way in which those "dot, dot, dots" appear to be invading our dreams and visions of who we are and how we might live out our existence in the context of "open-endedness." As some of us are presently dealing with God's will in our lives, we are discovering that to experience God's will is not like gaining access to a roadmap but a daily sojourning with the One who calls us to "leave our homeland and go to the place that He will show us." As others of us are dealing with failure in our lives, we are discovering that to live within the context of the ellipsis is to recognize no failure as final. As many of us are handling changes and newness in our lives, we are coming to understand that transformation is a part of living within the arena of "dot, dot, dots."

As together we become caught up in this whole new world of existence, one of open-endedness, we are invited to dream a dream for our campus. A dream that...

...a nucleus of persons will share an enthusiasm for the Good News that

God is with us in Jesus Christ. On our campus, let's unashamedly experience the presence of Christ, confess Him as Lord and live out His calling freely and openly.

...a nucleus of persons will live up to the "Trevecca Attitude." On our campus, let's allow our outlooks to penetrate whatever dark skies may come and to rise above the pessimism and suspicion that can so easily sap our energy. Let's come to recognize that the sun really never does stop shining.

...a nucleus of persons will be committed to a vision of authentic community. If lions and lambs are beckoned to lie together in the divine Kingdom, so on top of this hill may we live toward that same vision. Let's applaud the tremendous diversity of Trevecca while at the same time celebrate our oneness of vision and purpose.

Sharing the Dream...a dream that grows out of the understanding that God's future for us remains wide open! Let's enter the open door to that new world of understanding. May that dream permeate our chapels, our study habits, and our relationships. Most of all, may our lives be open to God's creative activity in each of our lives. What a joy it is to be your chaplain. Let's share the dream...together...



Chaplain Tim Green accepting the 1992 Teaching Excellence Award

## EDITORIAL:

## HOW DOES YOUR GARDEN GROW?

By Juan Arroyo

Welcome to the Purple and White Zone. Fasten your seatbelts and get ready to experience the most exciting time of your life.

O.K. maybe not the MOST exciting time of your life because we all have different opinions of what excitement means. For some, excitement means meeting new people while for others it means leaving people (parents.) For others, though, excitement is knowing that this is the last semester before graduation. However excitement is defined in your personal dictionary, I am sure you will experience some at Trevecca.

In discussing different opinions regarding excitement, there are many different attitudes that have been observed at TNC that are supposed to display some kind of excitement. For most of

us, those attitudes are an insult to maturity.

Those observed are the Negative Critics. These individuals think that putting down Trevecca is fun and exciting. These people rarely attend special TNC-sponsored events, yet they complain about the organization, food, or people attending when they do attend. Negative critics also criticize professors. My question is: How can you criticize someone who has a degree in a specific field and spends his or her time to make you a better person? Negative critics complain about the way the buildings look but practice vandalism themselves. They are like weeds in a garden--just there to kill other plants and make the garden ugly.

Having similar attitudes are the Sarcastic Analyzers. These individuals proclaim fame and "coolness" by practicing

attitudes that are similar to these of the Negative Critics. They also are like weeds, much like poison ivy with pretty colors and shapes but dangerous.

An other type of foliage the TNC garden is the "too good for TNC" group. These pretty flowers feel like they do not belong in the garden. Their motto is "I'm too sexy (or smart or cool) for this school." These flowers don't produce fruit or seeds. They live and die.

If we mix all the attitudes, the result is the All Around Apathy (the whole family of weeds put together). These weeds spread so fast and full that in the blink of an eye the whole garden is infested.

How can we prevent the All Around Apathetics from infesting Trevecca? What can you do about it? You can help our garden to look

more beautiful by acting more like a flower and less like a weed. A nice garden contains Positive or Constructive Critics. If they criticize they also provide a solution to the problem and help to solve it. The garden needs Edifiers. This group is helped by well adjusted individuals--they simply fit. If you are able to achieve all these positive attitudes then you will be a "purple and whiter," "a TNCer," "a Treveccan," "a Trojan," "a Trevecca student."

Let's not be Negative critics but Positive and Constructive Critics. Let's not be Sarcastic Analyzers but Edifiers. Let's not be "Too good for this school" but well-adjusted. Let's stop being All Around Apathetic and be Purple and White. After all, this school is Purple and White...and you. Exciting, isn't it?

Following is a list of new faculty, administration and staff members and their descriptions for the 1992-93 school year.

-Dr. Stephen Pusey, vice-president of academic affairs  
-Fred Huff, vice-president of church relations  
-Curtis Lewis, religion  
-Doug Lepter, communications  
-Dave Lennon, physician assistant  
-Gerald Stone, physical therapy  
-Mary Jo Davenport, physical therapy  
-Renae Kirkhart, physical education  
-David Slamp, Christian education  
-Ronald Smith, mathematics  
-Rondy Smith, acting director of the MHR program and director of the Masters of Organizational Management program  
-Carolyn Smith, assistant MHR director for assessment  
-Perry Carpenter, MHR assessment counselor  
-Mark Greathouse, director of alumni relations  
-Marilyn Modine, alumni secretary  
-Gay Haviland, secretary to chief fiscal officer

## TNC DEAN'S LIST, SPRING '92

\* indicates 4.0

Abney, Glenda D.  
Adams, Christopher J.  
Adams, Jeffrey W.  
Adams, Kelly S.  
Adams, Tonya D.  
Agnew, Nicole C.  
Albert, Kimberley M.  
\*Anderson, Michelle M.  
\*Andress, Kimberly D.  
\*Arroyo, Juan M.  
Attig, Keri A.  
\*Baker, Jill M.  
Bean, Terri A.  
\*Bert, Tanya J.  
\*Best, Jerry M., Jr.  
Black, Jennifer R.  
Blanchette, Leon M., Jr.  
Blomquist, Julie A.  
Bloom, Byron J.  
Bogard, Lisa G.  
Boswell, Cecil E.  
Bradley, Stephanie M.  
Brown, Jami L.  
\*Brown, Kimberly J.  
\*Bullock, Charles B.  
Cagle, Paula J.  
Calfree, Benjamin D.  
Campbell, Brenda  
Carey, Tanya D.  
\*Carter, Davis L.  
Chaille, Amanda H.

Chamberlain, Catherine E.  
Chiu, Jessica M.  
Clark, Mark S.  
Coffey, Lisa M.  
Coleman, Edward B.  
Collier, Nathan A.  
Collom, Julie C.  
Costa, Pamela R.  
Cox, Julie R.  
Daniel, Sonya L.  
Darsey, Mary A.  
Davis, Janeene A.  
DeYoung, Mark A.  
Durden, Tammy G.  
Duvall, James R.  
Ecenrode, Fredrick W.  
\*Elkins, Carla J.  
\*Foster, Amy C.  
Foster, Michelle J.  
Fraley, Scott A.  
\*Fuller, Lita K.  
Fuller, Sandra D.  
\*Gardner, Rebecca R.  
\*Garrison, Deedra R.  
Gootee, Laura K.  
\*Gossard, David R.  
Greer, Michelle R.  
Gutreuter, Wendy L.  
\*Hampton, Christopher T..  
\*Hartsock, Lisa A.  
Hayes, Violetta M.

Hembree, Shannon L.  
\*Henderson, Janet S.  
Higgins, Charles C.  
\*Hill, Valicia, L.  
\*Hogan, Virginia A.  
Hopper, Cheryl J.  
\*Howell, Anita D.  
Huber, Karen A.  
\*Huggins, Melanie L.  
Hyde, Susan M.  
Ikes, Carol L.  
\*Isbell, Tracy L.  
Jeffers, Edgar A.  
\*Jenkins, Laura K.  
\*Johnson, Gregory D.  
Johnson, Matthew H.  
Joyer, Ruby J.  
Kamel, Laudi S.  
Keen, Heather D.  
\*Kelle, Brad E.  
Kenes, Gwendolyn M.  
\*Kinworthy, Lisa K.  
\*Langford, Esther E.  
Ley, Earnest R.  
Linton, Lonnie E.  
\*Lisle, Mary E.  
Long, April A.  
Madil, Heather D.  
Marcarelli, Sharon L.  
\*McAdory, Michael C.  
McClure, Tammra D.

McGranahan, Jamen L.  
McNutt, Linnea S.  
\*Miller, Holly A.  
\*Miller, Paula S.  
Moore, Melissa D.  
Mrasz, Gary L.  
Mund, Douglas K.  
Murapa, Mucha E.  
\*Nash, Erin E.  
Neil, Paul R.  
\*Newman, Shaun P.  
Nichols, Stacie L.  
Norman, Kelly A.  
\*Onstead, Daniel D.  
Onstead, Eric L.  
Owsley, Renee L.  
Parrish, Kara Y.  
Plourde, John F.  
\*Powell, Jennifer L.  
\*Ramey, Michelle H.  
Reeder, Annette L.  
Rhodes, Shonnie M.  
Rich, Tina D.  
\*Richards, Ruthlyn C.  
Richards, Worthson J.  
\*Roberts, Jeffrey S.  
Robinson, Norman Jr.  
Rosecrans, Christy A.  
Russell, Shannon D.  
Sayre, Kimberly D.

Schott, Timothy A.  
Scott, Jason N.  
Sharpes, Erica M.  
\*Showalter, Geron S.  
Siennicki, Gerald  
\*Sims, Brian S.  
Smerick, Christina M.  
St. John, James M.  
\*Stanfield, Yuvon F.  
Stipe, Tammy M.  
Strack, Dawn R.  
Taylor, Lanagayle  
Thornhill, Edward D.  
Tiegs, Tammie R.  
\*Tinker, Kimberly D.  
\*Trees, Eric L.  
Ungerbuehler, Lisa K.  
\*Unruh, Rana C.  
Vondohlen, Christopher W.  
Walker, Kevin L.  
\*Whitener, Alice S.  
\*Whitmire, Hilda A.  
Weisman, Teri J.  
Wilcox, Carrie A.  
Williams, Leanne Y.  
\*Williams, Shasta A.  
Wilson, Dennis S.  
Wooten, Eric T.  
Wynn, Sandra D.  
Yarbrough, Charlie E.  
\*Zuercher, Karla R.